



NORTH SHORE FIRE DEPARTMENT

2005 RESPONSE INFORMATION

1

NORTH SHORE FIRE DEPARTMENT

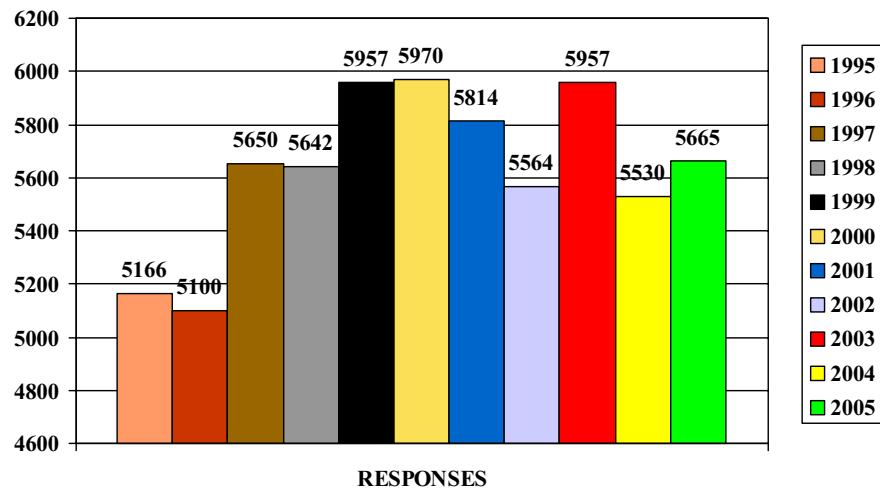
RESPONSE INFORMATION

YEAR	FIRE	MEDICAL	TOTAL
1995	1674	3492	5166
1996	1740	3360	5100
1997	2144	3506	5650
1998	1965	3677	5642
1999	1930	4027	5957
2000	1954	4016	5970
2001	1744	4070	5814
2002	1695	3869	5564
2003	1954	4003	5957
2004	1608	3922	5530
2005	1691	3974	5665

2

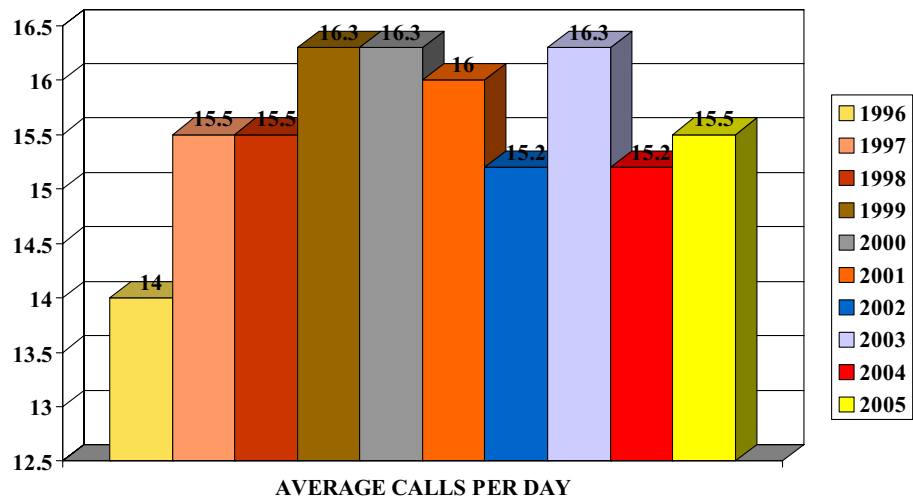
NORTH SHORE FIRE DEPARTMENT

RESPONSE INFORMATION



3

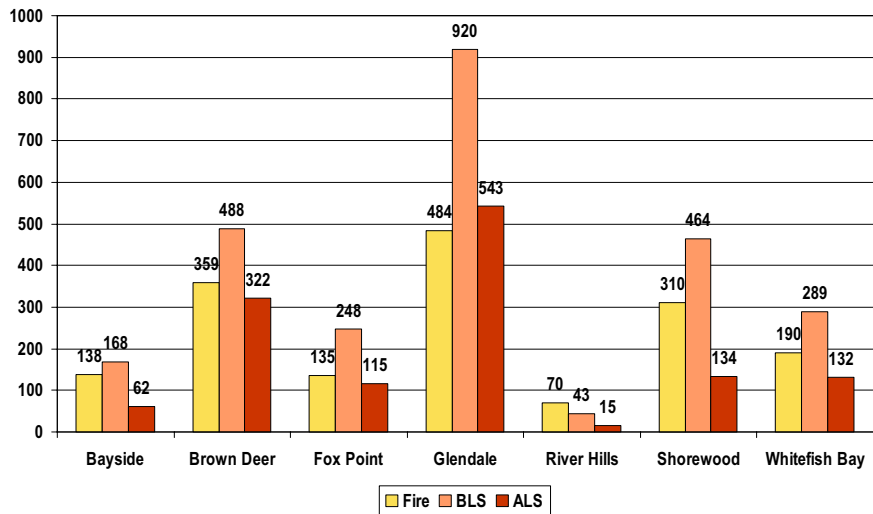
NORTH SHORE FIRE DEPARTMENT



4

NORTH SHORE FIRE DEPARTMENT

2005 Responses By Community



5

NORTH SHORE FIRE DEPARTMENT

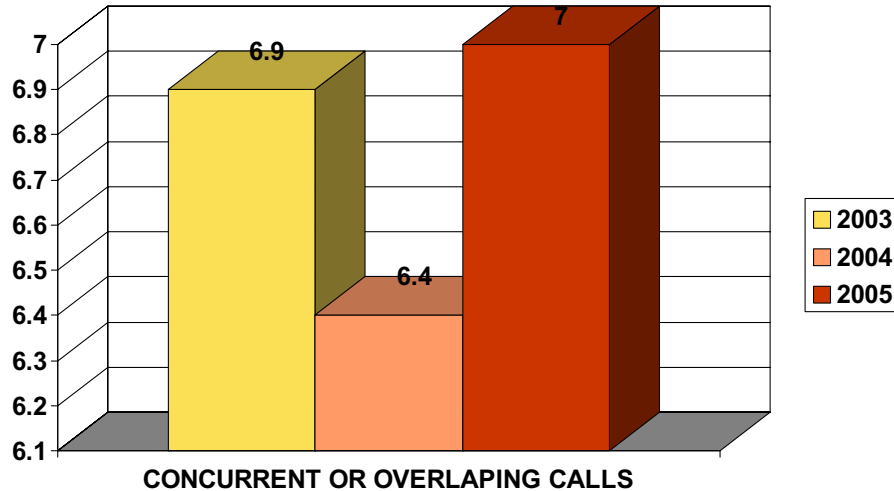
2005 Calls By Percentage



6

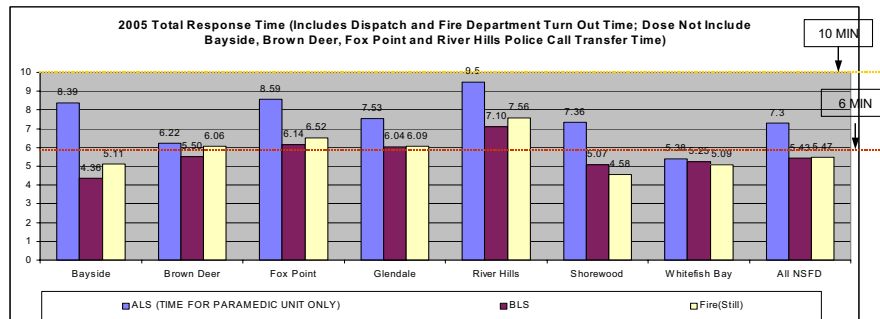
NORTH SHORE FIRE DEPARTMENT

THIS IS THE AVERAGE NUMBER OF CALLS THAT OVERLAP OR ARE SIMULTANEOUS (OUR SOFTWARE HAS 3 YEARS OF DATA)



7

NORTH SHORE FIRE DEPARTMENT



NATIONAL FIRE PROTECTION ASSOCIATION RESPONSE TIME STANDARDS

- TOTAL TIME FOR FIRST FIRE RESPONSE ON SCENE (RED LINE)
6 MINUTES = 1 MINUTE DISPATCH + 1 MINUTE TURNOUT + 4 MINUTE RESPONSE
- TOTAL TIME FOR FIRST EMS ON SCENE (RED LINE)
6 MINUTES = 1 MINUTE DISPATCH + 1 MINUTE TURNOUT + 4 MINUTE RESPONSE
- TOTAL TIME FOR ADVANCED LIFE SUPPORT (ALS) UNIT ON SCENE (BLUE LINE)
10 MINUTES = 1 MINUTE DISPATCH + 1 MINUTE TURNOUT + 8 MINUTE RESPONSE
- CALL TRANSFER TIMES FOR BAYSIDE, FOX POINT, RIVER HILLS AND BROWN DEER ARE NOT KNOWN 8

NORTH SHORE FIRE DEPARTMENT

- **Fires**

- 1 OR 2 FAMILY = 28
- APARTMENTS = 15
- HOTELS = 0
- PUBLIC ASSEMBLY = 4
- SCHOOLS = 4
- HEALTH CARE = 1
- STORES & OFFICES = 4
- INDUSTRIAL = 3
- STORAGE = 4
- OTHER STRUCTURES = 11

9

NORTH SHORE FIRE DEPARTMENT

- **Other Fires**

- VEHICLES = 14
- OUTSIDE (GRASS, BRUSH, ETC.) = 16
- DUMPSTER/RUBBISH = 6
- OTHER = 5

10

NORTH SHORE FIRE DEPARTMENT

- **Other Responses**
 - False or Unintentional Alarm Responses = 734
 - Hazardous Spills = 178
 - Other Hazards/Public Assistance = 337
 - Box Alarms = 5
 - Second Alarm = 1
 - Extrication/Disentanglement = 9
 - Vehicle Accident = 218
 - Carbon Monoxide = 125
 - Non Emergency or Downgraded Responses = 399

11

NORTH SHORE FIRE DEPARTMENT

**ESTIMATED NORTH SHORE PROPERTIES SAVED BY
FIRE SUPPRESSION WAS APPROXIMATELY 91
MILLION DOLLARS**

**THE 2005 LOSS REPRESENTS .0001% OF THE TOTAL
PROTECTED VALUE**

**ESTIMATED FIRE LOSS FOR THE SEVEN (7)
COMMUNITIES TOTALED \$.76 MILLION IN 2005.**

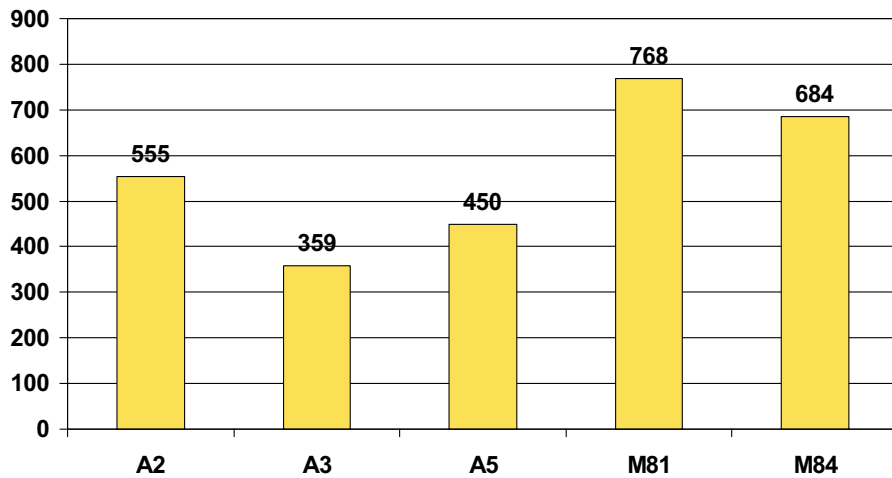
**ESTIMATED VALUE OF THE PROPERTY AT RISK WAS
\$91.76 MILLION.**

**THESE FIGURES ARE BASED ON CURRENT
PROPERTY VALUES TOTALING \$ 5.3 BILLION**

12

NORTH SHORE FIRE DEPARTMENT

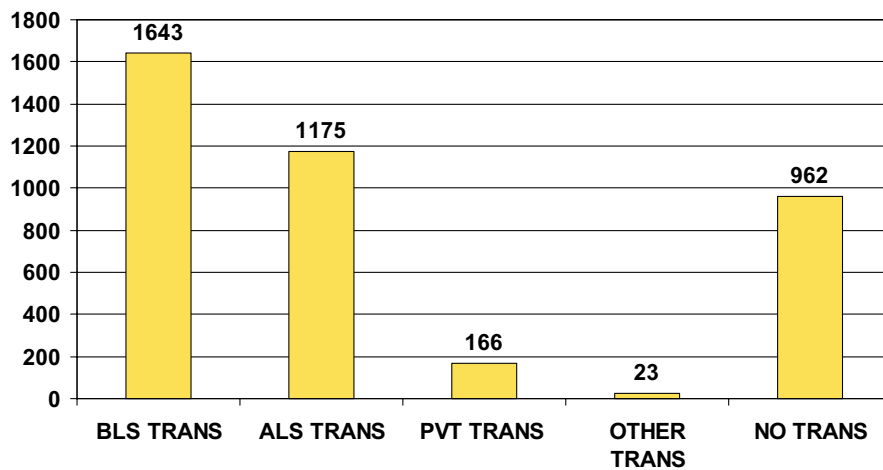
AMBULANCE TRANSPORTS FOR 2005



13

NORTH SHORE FIRE DEPARTMENT

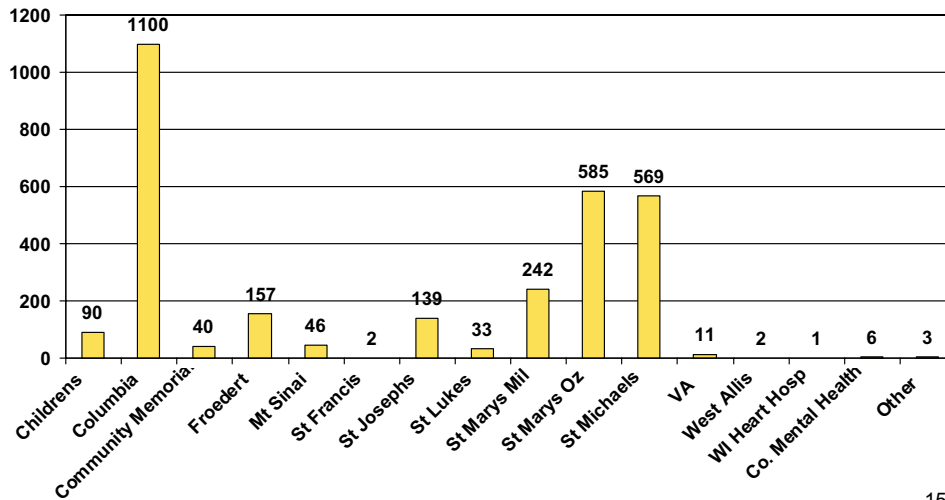
AMBULANCE TRANSPORTS FOR 2005



14

NORTH SHORE FIRE DEPARTMENT

HOSPITAL CONVEYANCE FOR 2005
FOR ALL (NORTH SHORE, PRIVATES, MILWAUKEE, ETC.)



15

NORTH SHORE FIRE DEPARTMENT

- Number of Requests For Milwaukee ALS Coverage Area = 27
 - Number of Transports From Milwaukee ALS Coverage Area = 7
-
- Number of Times Milwaukee ALS Transported From North Shore = 20

16

NORTH SHORE FIRE DEPARTMENT

2005 Patient Assessments Performed

ANGINA / MI	252	POISON / OVERDOSE	55
ARRHYTHMIA / PALPITATION	124	SUBSTANCE ABUSE	25
CARDIAC ARREST	84	ALLERGIC RX	26
CHF	61	HYPOTENSION / SHOCK	139
AIRWAY OBSTRUCTION	26	OTHER VASCULAR	15
COPD	31	HYPERTENSION	36
ASTHMA	45	ALTERED CONSCIOUSNESS	198
INHALATION INJURY	4	CVA / TIA	80
RESPIRATORY ARREST	58	SEIZURE	142
RESPIRATORY DISTRESS	377	SYNCOPE	186
COUGH	28	TRAUMA - BLUNT	760

17

NORTH SHORE FIRE DEPARTMENT

Patient Assessments Performed

ANGINA / MI	219	POISON / OVERDOSE	40
ARRHYTHMIA / PALPITATIO	97	SUBSTANCE ABUSE	16
CARDIAC ARREST	65	ALLERGIC RX	16
CHF	45	HYPOTENSION / SHOCK	120
AIRWAY OBSTRUCTION	20	OTHER VASCULAR	16
COPD	19	HYPERTENSION	32
ASTHMA	53	ALTERED CONSCIOUSNES	177
INHALATION INJURY	7	CVA / TIA	83
RESPIRATORY ARREST	41	SEIZURE	108
RESPIRATORY DISTRESS	294	SYNCOPE	121

Number of Patient Assessments Performed From = 5368

18

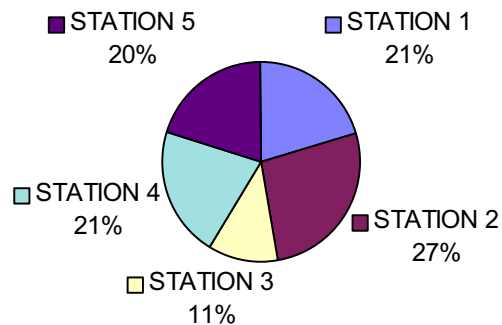
NORTH SHORE FIRE DEPARTMENT

- Mutual Aid
 - Mutual Aid Given
 - Fire = 3
 - EMS = 2
 - Mutual Requested
 - Fire = 1
 - EMS = 41 Milwaukee ALS
 - EMS Transport = 20 Milwaukee ALS

19

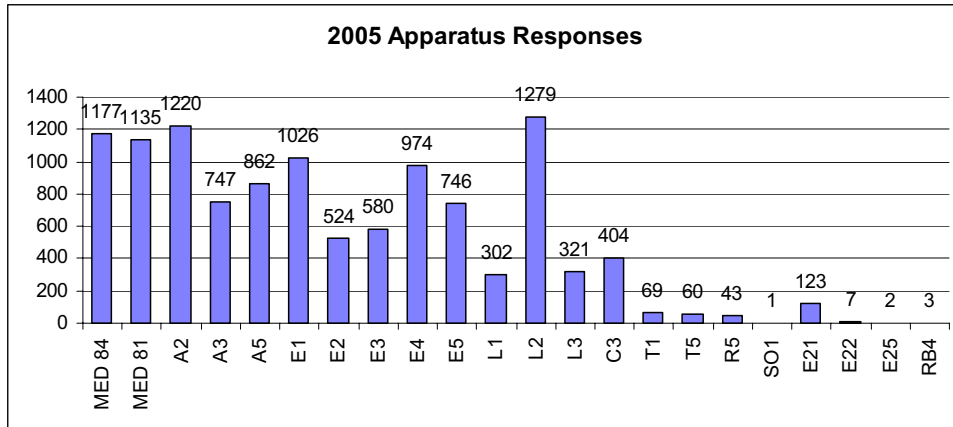
NORTH SHORE FIRE DEPARTMENT

2005 RESPONSES BY STATION



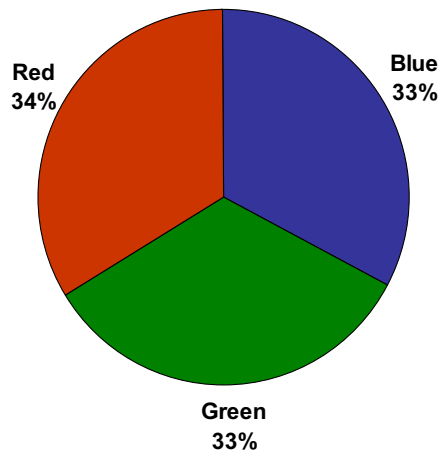
20

NORTH SHORE FIRE DEPARTMENT



NORTH SHORE FIRE DEPARTMENT

2005 RESPONSES BY SHIFT



NORTH SHORE FIRE DEPARTMENT

2005 RESPONSES BY TIME OF DAY FIRE AND EMS

