

# Adult Education

## **DCC Learning Center**

15100 Northline Road  
Southgate MI. 48195  
[www.dccwf.org](http://www.dccwf.org)  
734-362-3481

Certified teachers specializing in adult remedial education assist eligible and paying customers who require improvement in reading & math skills to obtain employment or enroll in training. Training is often individualized and includes math and reading enhancement, self-paced interactive computer programs and interest, aptitude, and achievement testing. Self-paced computer tutorials for GED preparation, coupled with classroom instruction have been added to assist customers preparing for the GED. Computer classes are also available.

[www.FindTuition.com](http://www.FindTuition.com)

Search for career colleges and **adult education** scholarships!

## **Southgate Adult & Community Education (SACE)**

734-246-4633

[www.southgateadulthood.org](http://www.southgateadulthood.org)

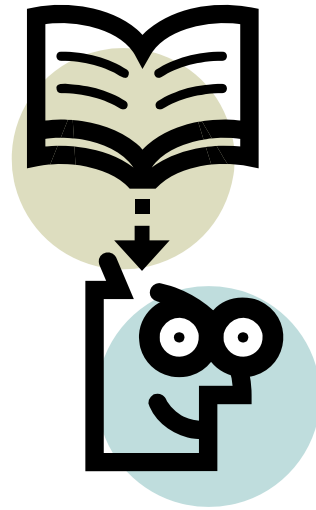
Offers programs from High School completion, GED preparation, English as a Second Language, and alternative education.

## **Washtenaw County Community College**

Offers summer GED testing.

[http://www.wccnet.edu/student-services/otherservices/testingcenter/ged\\_testschedule.php](http://www.wccnet.edu/student-services/otherservices/testingcenter/ged_testschedule.php)

# GED Preparation



## Study for the GED Exam

- 📖 Open Lab Setting
- 📖 Self-Paced
- 📖 Flexible Hours
- 📖 Only \$15 Per Week  
(Cash, Check, or Money Order)

### Same Day Open Enrollment

Downriver Community Conference  
15100 Northline Rd., Southgate  
Walk-In Registration in Room 176

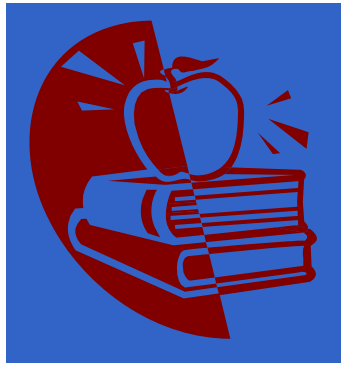
### Lab Hours

Monday - Friday  
8:30 am-4:30 pm

### Call for More Information

Tom (734) 362-3481  
Monna (734) 362-3428

# WorkKeys Preparation and Testing for Paraprofessionals



at the  
**Downriver  
Community  
Conference**

## Required Assessments for No Child Left Behind Paraprofessionals

Reading for Information • Applied Mathematics • Writing

### Study for the Exam

Open Lab Setting

Self-Paced

Flexible Hours

Cost is \$15 per Week

(cash, check, or money order)

Offered every other Wednesday  
at 9:30 am. In Room 176 (by  
appointment).

Cost for entire test is \$55.

Re-testing/single test fees are  
\$25 for Writing; \$18 each for  
Reading or Math.

### Same Day Open Enrollment

15100 Northline Rd., Southgate

Walk-in Registration - Rm. 176

Monday - Friday

8:30 am - 4:30 pm

### WorkKeys Exam

### Contact Information

To schedule a test, or for further  
information, contact Tom Julien  
at (734) 362-3481,  
or by email at [tomj@dccwf.org](mailto:tomj@dccwf.org)

WorkKeys Website - <http://www.act.org/workkeys>